

# CONCRETE DESIGN GUIDE



BRICKFORM



# CONCRETE DESIGN GUIDE



BRICKFORM



## Table of Contents

Sample Color Combinations.....	4 - 5
Seamless Texture Skins .....	6 - 11
Stone Textures.....	12 - 23
Slate Textures.....	24 - 31
Wood Textures.....	32 - 33
Brick Textures .....	34

Final appearance and color may vary from these photos. This document is only a guide and is not intended to replace practical mock-ups or samples. Work with a contractor to determine the best color and texture/finish combinations. Many factors affect appearance, so representative jobsite samples/mock-ups are recommended prior to construction. **Solomon Colors/Brickform accepts no responsibility for color matching or misprints.**





**Large Ashlar Cut Slate**  
Stone Gray Color Hardener / Medium Gray Antique Release



**Ashlar Cut Slate**  
Solomon Integral Color Doeskin / Light Gray Antique Release / ARTesian Stain

## THE BRICKFORM Stamped Concrete System

Stamped concrete is the foundational decorative concrete system. Brickform is the leading name in stamped concrete, with half a century of experience in manufacturing professional grade materials for the concrete contractor.

**Texture** – Surface textures are created by patterned stamps and seamless texture skins.

**Color** – Integral color is mixed in the concrete truck and will create color throughout the concrete. Color Hardener is topically applied and allows for some freedom to color the concrete with bold or pastel colors that cannot be achieved with integrally colored concrete because of its gray base. Antiquing colors add definition and variation. Stains are also available to color your new or existing concrete projects. They may be used as accent colors to create a one-of-a-kind final look.

**Sealer** – Many different sealers are available that provide various levels of color enhancement, surface sheen and protections for your concrete hardscape.

**Maintenance & Restoration** – Stamped concrete should be periodically cleaned using a broom, water, and mild detergent such as Neutra Clean. Generally, concrete should also be resealed using the same sealer every two to three years, or as conditions dictate.



**Cedar Wood**  
Solomon Integral Color Ginger / Desert Tan Antique Release



When **CHOOSING COLORS** for stamped concrete, it is recommended to compliment your existing hardscape versus trying to match an existing color. The sample pictures below are to help you identify approximate color ranges for your base color and your release. Look at the samples below and identify which of the combinations of base color (Color Hardener or Integral Color) and release agent



**Blue Stone Texture Skin**

Brickform Integral Color Chamois / Desert Tan Antique Release



**Blue Stone Texture Skin**

Brickform Integral Color Slate / Dark Gray Antique Release



**Blue Stone Texture Skin**

Brickform Integral Color Leather / Nutmeg Antique Release



**Blue Stone Texture Skin**

Brickform Integral Color Oak / Medium Gray Antique Release



**Blue Stone Texture Skin**

Brickform Integral Color Deer Valley / Walnut Antique Release



**Blue Stone Texture Skin**

Brickform Integral Color Fog / Medium Gray Antique Release



are similar to what you are looking for. Then on the following pages, find the pattern you like and refer back to these pages to finalize your color selection. Always remember, these are pictures of samples. To ensure the true coloration, request a jobsite sample from your contractor prior to installation.



**Paladiano Stones of Athens**  
Sandstone Color Hardener / Nutmeg Antique Release



**Paladiano Stones of Athens**  
Sun Buff Color Hardener / Chestnut Antique Release



**Paladiano Stones of Athens**  
French Gray Color Hardener / Dark Gray Antique Release



**Paladiano Stones of Athens**  
Oyster White Color Hardener / Nutmeg Antique Release



**Paladiano Stones of Athens**  
Smokey Blue Color Hardener / Dark Gray Antique Release



**Paladiano Stones of Athens**  
Cappuccino Color Hardener / Sunbaked Clay Antique Release



**SEAMLESS TEXTURE SKINS** are feathered edge stamping tools that can be rotated and overlapped for infinite texture variety. Texture skins can be used to touch up and supplement patterned textures, or they can be used as the primary tool for a striking, continuous texture.



**Rough Stone**

Cream Beige Color Hardener / Desert Tan Antique Release



**Rough Stone**

Cappuccino Color Hardener / Desert Tan Antique Release



**Rough Stone**

Solomon Integral Color (Custom) / Nutmeg Antique Release





### **Rough Stone**

Solomon Integral Color Ginger / Smokey Beige Antique Release



### **Rough Stone**

Sandy Buff Color Hardener / Nutmeg Antique Release



### **Rough Stone**

Stone Gray Color Hardener / Medium Gray Antique Release





**Roman Slate**  
Solomon Integral Color Bamboo / Dusty Rose Antique Release



**Roman Slate**  
Solomon Integral Color Ginger / Pecos Sand Antique Release  
Border: Mission Brown Acid Stain



**Roman Slate**  
Adobe Buff Color Hardener / Terra Cotta Antique Release





**Roman Slate**  
Solomon Integral Color Ceramic, Liquid Release



**Roman Slate / Saw-Cuts**  
Cappuccino Color Hardener / Desert Tan Antique Release / Acid Stain (diluted)



**Roman Slate**  
Solomon Integral Color Ceramic, Liquid Release





**Heavy Stone Texture Skin**  
 Stone Gray Color Hardener (border) / Light Gray Antique Release



**Heavy Stone**  
 Blush-Tone Acid Stain Mahogany / Antique-It Walnut





### **Sierra Seamless Texture Skin**

Solomon Integral Color Canvas / Desert Tan Antique Release



### **Desert Slate**

Solomon Integral Color Desert Tan / Terra Cotta Antique Release



### **Sierra Seamless**

Sunbaked Clay Color Hardener / Autumn Brown Antique Rel.  
Border - Integral Color Chamois / Lt Gray Antique Release



**STONE** is a natural material with inherent beauty. For centuries, it has been the standard paving and building material. While its rustic appeal still holds in modern times, the expense and limitations are a deterrent. Stone textures for stamped concrete reduce the labor costs and give more creative control and uniformity without sacrificing visual appeal.



**European Fan**

Adobe Buff Color Hardener (Saddle Brown border) / Light Gray Antique Release



**European Fan**

Cappuccino Color Hardener / Desert Tan Antique Release



**European Fan**

Ash White Color Hardener / Cappuccino Antique Release



**European Fan**

Sunbaked Clay Color Hardener / Terra Cotta Antique Release (excludes border)





### London Cobble

Sunbaked Clay Color Hardener / Dark Gray Antique Release



### London Cobble

Brickform Integral Color Sienna / Walnut Antique Release



### London Cobble

Brick Red Color Hardener / Dark Gray Antique Release





**Random Stone**  
Dover Blue Color Hardener / Light Gray Antique Release



**Random Stone**  
Stone Gray Color Hardener / Light Gray Antique Release



**Random Stone**  
Sunbaked Clay Color Hardener / Walnut Antique Release





**Lincoln Trail Large Random**

Solomon Integral Color Canvas / Nutmeg, White Antique Release



**Lincoln Trail Large Random**

Solomon Integral Color Ginger / Medium Gray Antique Release / ARTesian Stain



**Castle Stone**

Solomon Integral Color Sedona / Autumn Brown Antique Release



**Castle Stone**

Cream Beige Color Hardener / Buff Tan Antique Release





**Cobblestone Radius**

Solomon Integral Color Rawhide / Medium Gray Antique Release



**Cobblestone Radius**

Quarry Red Color Hardener / Dark Gray Antique Release



**Lotus Blossom Medallion, Cobblestone Radius Tool B**

Golden Sandstone Color Hardener / Nutmeg Antique Release / ARTesian Stain





**Paladiano Yorkshire Cobble**

Stone Gray Color Hardener / Light Gray Antique Release



**Paladiano Pavimento of Paris**

Medium Gray Color Hardener / Light Gray Antique Release / ARTesian Stain





### Flagstone

Golden Sandstone Color Hardener / Buff Tan Antique Release



### Flagstone

Dover Blue Color Hardener / Liquid Release / ARTesian Stain (diluted)



### Flagstone

Cream Beige, Terra Cotta Color Hardener / Medium Gray Antique Release





**Verona Stone**

Adobe Buff Color Hardener/ Smokey Beige Antique Release



**Verona Stone**

Stone Gray Color Hardener / Light Gray Antique Release

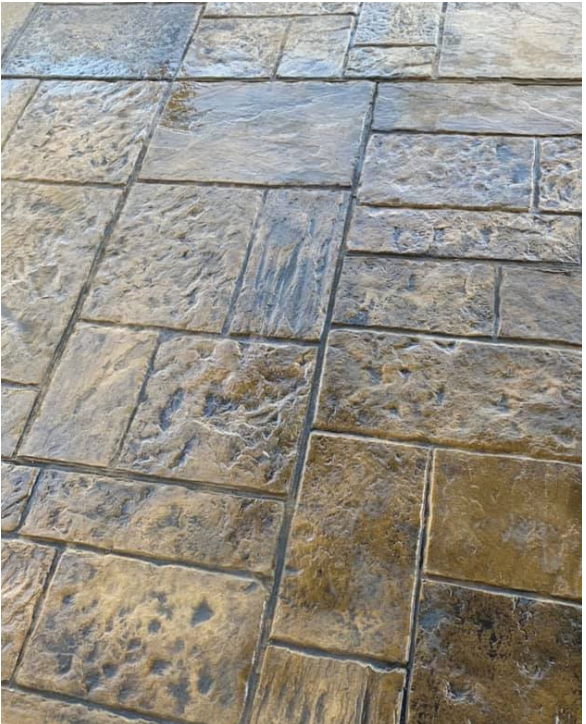




**Paladiano Stones of Athens**  
Brickform Integral Color Slate / Dark Gray Antique-It



**Paladiano Stones of Athens**  
Brickform Integral Color Croissant / Nutmeg Antique Release / ARTesian Stain



**Paladiano Stones of Athens**  
Solomon Integral Color Bamboo / Dark Gray Antique Release





### Paladiano Stones of Athens

Adobe Buff Color Hardener / Medium Gray Antique Release



### Paladiano Stones of Athens

French Gray Color Hardener / Dark Gray Antique Release



### Paladiano Stones of Athens

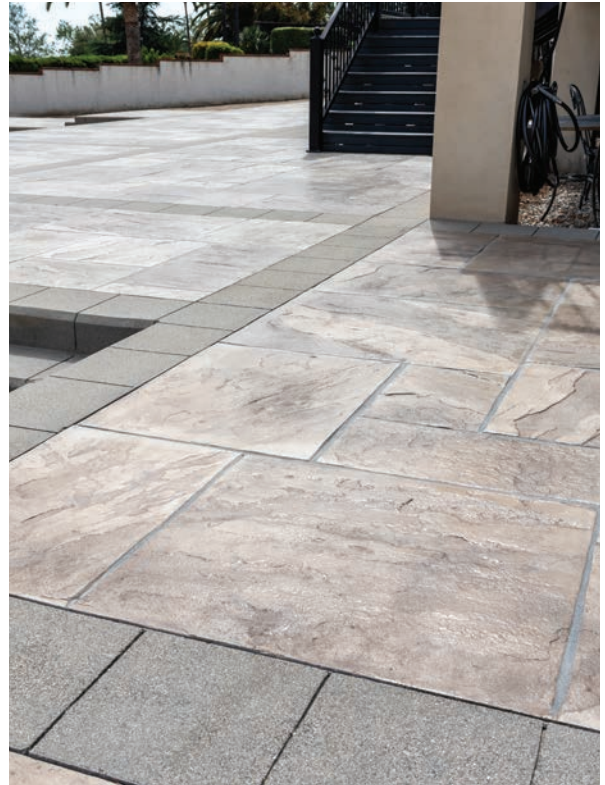
Sandstone Color Hardener / Nutmeg Antique Release





**Yorkstone Set**

Ash White Color Hardener / Sun Buff Antique Release



**Yorkstone / Surface Deactivator**

Ash White Color Hardener / Desert Tan Antique Release



**Rough Cut Ashlar**

Solomon Integral Color Driftwood / Medium Gray Antique Release



**Rough Cut Ashlar**

Solomon Integral Color Thyme / Dark Gray Antique Release





**Paladiano Hammered Sofia Stone**  
Solomon Integral Color Marigold / Autumn Brown Antique-It



**Pennsylvania Cobble**  
Autumn Brown Color Hardener / Dark Gray Antique Release



**Tuscany Stone**  
Ash White Color Hardener / Cappuccino Antique Release



**SLATE** patterns provide a natural texture and are an excellent option for indoor surfaces and outdoor hardscapes. Achieve the appearance of slate pavers without the limitations of high labor costs or fragile building materials.



**36" Ashlar Cut Slate**

Cappuccino Color Hardener / Desert Tan Antique Release



**36" Ashlar Cut Slate**

Sun Buff Color Hardener / Medium Gray Antique Release



**36" Ashlar Cut Slate**

Brickform Integral Color Harvest Gold / Pecos Sand Antique Release





**Large Ashlar Cut Slate**  
Desert Tan Color Hardener / Buff Tan Antique Release / ARTesian Stains



**Large Ashlar Cut Slate**  
Ash White Color Hardener / Light Gray Antique Release





**Large Ashlar Cut Slate**  
Adobe Buff Color Hardener / Smokey Beige Antique Release



**Large Ashlar Cut Slate**  
Adobe Buff Color Hardener / Medium Gray Antique Release



**Large Ashlar Cut Slate**  
Solomon Integral Color Marigold / Buff Tan Antique Release





### Ashlar Cut Slate

Cappuccino Color Hardener / Autumn Brown Antique Release



### Ashlar Cut Slate / Yorkstone

Adobe Buff Color Hardener / Sun Buff Antique Release / ARTesian Stain Magnet



### Ashlar Cut Slate

Stone Gray Color Hardener / Medium Gray Antique Release





**Ashlar Cut Slate**  
Solomon Integral Color Doeskin / Light Gray Antique Release / ARTesian Stain



**Ashlar Cut Slate**  
Tile Red Color Hardener / Walnut Antique Release



**Ashlar Cut Slate / Yorkstone**  
Solomon Integral Color Ceramic / Smokey Beige Antique Release





**Regal Ashlar / Sierra Seamless**  
 Stone Gray Color Hardener / Dark Gray Antique Release



**Regal Ashlar**  
 Light Gray Color Hardener / Medium Gray Antique Release



**American Ashlar**  
 Solomon Integral Color Doeskin / Desert Tan Antique Release





**Herringbone Slate**  
Solomon Integral Color Cedar / Medium Gray Antique Release



**Running Bond Slate**  
Solomon Integral Color Prairie Tan / Copper Brown Antique Release  
Border: ARTesian Stain



**12 x 12 Slate**  
Cream Beige Color Hardener / Desert Tan Antique Release





### Paladiano Fractured Cyprus Slate

Golden Sandstone Color Hardener / Light Gray Antique Release / ARTesian Stain



### Grand Ashlar

Golden Sandstone Color Hardener / Desert Tan Antique Release



**WOOD** patterns have endless possibilities and are excellent for creating durable surfaces, both interior and exterior. Patterns range from rustic to contemporary and mimic a multitude of natural wood surfaces.



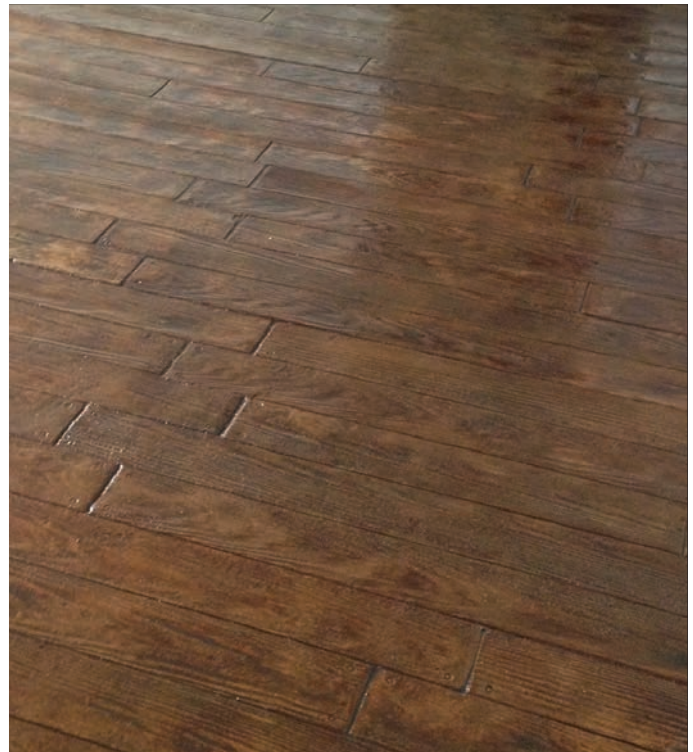
**3" Cedar Wood Flooring**  
Sandy Buff Color Hardener / Walnut Antique Release



**Classic Wood**  
Solomon Integral Color Rawhide / Medium Gray Antique Release



**Classic Wood**  
Solomon Integral Color Canvas / Chestnut Antique Release



**Classic Wood with Nailheads**  
Cappuccino Color Hardener / Walnut Antique Release /  
Aged Walnut ARTesian Stain





**Cedar Wood Plank**

Cappuccino Color Hardener / Chestnut Antique Release



**8" Weathered Wood**

Solomon Integral Color Ceramic / Medium Gray Antique Release



**Classic Wood**

Adobe Buff Color Hardener / Desert Tan Antique Release



**BRICK** is a classic and attractive finish for interior and exterior floors alike. Whether you are replacing a residential sidewalk or a commercial walkway, Stamped Concrete Brick patterns are used to mimic the natural appearance of brick pavers, while offering the longevity and durability of concrete.



**Herringbone Used Brick**  
Solomon Integral Color Sedona / Light Gray Antique Release /  
ARTesian Stain / SM Professional Grade Grout Lines



**Herringbone New Brick**  
Oyster White Color Hardener / Nutmeg Antique Release



**Basket Weave New Brick**  
Solomon Integral Color Terra Cotta / Medium Gray Release



**Herringbone New Brick / 4x8 New Brick Border**  
Sunbaked Clay Color Hardener / Chestnut Antique Release



**Brickform** would like to thank the following  
for their photo submissions:

*Concretec Ecuador*  
*Creative Concrete Concepts*  
*Creswell Concrete*  
*Decorative Concrete Finishes*  
*Designs in Concrete*  
*Edwards Concrete*  
*Eilar Construction*  
*FRSR Landscape*  
*General Concrete LTD*  
*Guzik Concrete Services*  
*Hoosier Concrete Construction*  
*Hotte Concrete Construction*  
*Hudecek Cement*  
*KP Construction*  
*Laflamme Concrete*  
*Lamberson Conctruction*  
*Lutz Concrete Solutions LLC*  
*Patterned Concrete of Cincinnati*  
*Power Concrete*  
*Power Concrete & Construction*  
*Pro-Tech Custom Concrete*  
*RC Concrete*  
*Shaw & Sons Concrete*  
*Smith Pools*  
*Symbolic Concrete Design*  
*Vandenburg Concrete*

**Connect with Brickform on social media to see more project inspiration.**



Final appearance and color may vary from these photos. This document is only a guide and is not intended to replace practical mock-ups or samples. Work with a contractor to determine the best color and texture/finish combinations. Many factors affect appearance, so representative jobsite samples/mock-ups are recommended prior to construction. **Solomon Colors/Brickform accepts no responsibility for color matching or misprints.**





BRICKFORM

Brickform, A Division of Solomon Colors, Inc.