



K.C. Bobcat



RENT TOUGH

YOUR SOURCE FOR EQUIPMENT RENTAL

**BLUE SPRINGS / OLATHE / TRACY / JOPLIN
SPRINGFIELD / ST JOE / SEDALIA**

WWW.KCBOBCAT.COM/RENTAL

GET IT RENTED GET IT DONE

NO TWO JOBS ARE THE SAME.

CONSTRUCTION

Why subcontract? Rent a Bobcat loader or excavator and boost profits by doing the work yourself. If you need to dig a trench, load materials, backfill or clean up, we can help!

LANDSCAPING

Bobcat's mini track loaders provide easy-to-use horsepower that fits just about anywhere. Replace hand labor and get work done quickly and efficiently in tight spaces.

CHORES AT HOME

No matter what job you need to finish on your property, Bobcat equipment can help—from moving dirt and land clearing, to installing fence and mowing.

KC Bobcat can help you find the right rental equipment to tackle your toughest jobs.

VISIT WITH US TODAY!

WWW.KCBOBCAT.COM/RENTAL

SEVEN GREAT LOCATIONS

BLUE SPRINGS: (816) 229-4006
1450 SE US 40 Hwy
Blue Springs, MO 64014

OLATHE: (913) 829-4600
1220 S Hamilton Cir
Olathe, KS 66061

TRACY: (816) 431-3001
100 Tracy Dr
Tracy, MO 64079

JOPLIN: (417) 385-1770
751 S Malang Rd
Joplin, MO 64804

SPRINGFIELD: (417) 865-3535
2060 N West Bypass
Springfield, MO 65803

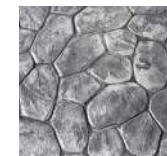
ST JOE: (816) 396-9020
3408 S Belt Hwy
St Joseph, MO 64503

SEDALIA: (660) 650-3611
3815 S Limit Ave
Sedalia, MO 65301

CONCRETE STAMPS \$150 Per Day/Per Set*



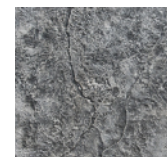
Renaissance



Random Stone



Wood Plank



Rough Stone



Grand Ashlar



Ashlar Slate

CONCRETE STAMPS AVAILABLE FOR RENT:

| | |
|---------------------|-----------------|
| ASHLAR SLATE | RANDOM STONE |
| BLUE STONE | RENAISSANCE |
| CYPRUS SLATE | ROMAN COBBLE |
| GRAND ASHLAR | ROUGH STONE |
| HEAVY STONE | STONE OF ATHENS |
| HERRINGBONE | USED BRICK |
| LONDON COBBLE | WOOD PLANK |
| PENNSYLVANIA COBBLE | |

*One set includes mats, tamper, and a floppy. Deposit Required.
All prices are subject to taxes damage waiver and environmental charges.

WWW.KCBOBCAT.COM/RENTAL

COMPACT EXCAVATORS

| MODEL | TONS | DIG DEPTH | DAY | WEEK | MO. |
|-----------|------|-----------|-------|-------|---------|
| E10 | 1 | 6 ft | \$250 | \$750 | \$1,800 |
| E20 | 2 | 8.4 | 260 | 780 | 1,872 |
| E26 | 2.6 | 8.8 | 270 | 810 | 1,944 |
| E35 | 3.3 | 10.2 | 335 | 975 | 2,340 |
| E42 | 4.2 | 10.5 | 370 | 1,110 | 2,664 |
| E50 | 4.8 | 11.6 | 405 | 1,215 | 2,916 |
| E60 | 6 | 13.1 | 415 | 1,245 | 2,988 |
| E85 / E88 | 8.6 | 15.5 | 500 | 1,590 | 3,816 |

EXCAVATOR ATTACHMENTS

| ATTACHMENT | DAY | WEEK | MO. |
|-----------------------|-------|-------|---------|
| AUGER WITH BIT | \$165 | \$495 | \$1,188 |
| BREAKER (150 FT LB) | 175 | 525 | 1,260 |
| BREAKER (500 FT LB) | 215 | 645 | 1,548 |
| BREAKER (750 FT LB) | 240 | 720 | 1,728 |
| BREAKER (1,500 FT LB) | 315 | 945 | 2,268 |
| PLATE COMPACTOR | 165 | 495 | 1,188 |

COMPACT TRACK LOADERS

| MODEL | ROC | HP | DAY | WEEK | MO. |
|--------------|-------|----|-------|-------|---------|
| MT85 / MT100 | 850 | 25 | \$265 | \$795 | \$1,908 |
| T450 | 1,400 | 61 | 315 | 945 | 2,268 |
| T595 | 1,995 | 66 | 375 | 1,125 | 2,700 |
| T62 | 2,150 | 68 | 375 | 1,125 | 2,700 |
| T64 | 2,300 | 68 | 395 | 1,140 | 2,736 |
| T66 | 2,450 | 74 | 395 | 1,140 | 2,736 |
| T76 | 2,900 | 74 | 445 | 1,260 | 3,024 |
| T740/770 | 3,200 | 74 | 480 | 1,440 | 3,456 |

SKID-STEER LOADERS

| MODEL | ROC | HP | DAY | WEEK | MO. |
|-------------|-------|----|-------|-------|---------|
| S450 | 1,370 | 49 | \$240 | \$720 | \$1,728 |
| S66/S595 | 2,400 | 74 | 260 | 780 | 1,872 |
| S650 | 2,690 | 74 | 280 | 840 | 2,016 |
| S76 | 2,900 | 74 | 280 | 840 | 2,016 |
| S740 / S770 | 3,100 | 74 | 370 | 1,110 | 2,664 |

MT85 ATTACHMENTS

| | DAY | WEEK | MO. |
|-----------------------|-------|-------|---------|
| AUGER WITH BIT | \$165 | \$495 | \$1,188 |
| BREAKER (150 FT. LB.) | 175 | 525 | 1,260 |
| GRAPPLE BUCKET | 115 | 345 | 828 |
| PALLET FORKS | 65 | 195 | 468 |
| SOIL CONDITIONER | 140 | 420 | 1,008 |
| TILLER | 140 | 420 | 1,008 |
| TRENCHER | 140 | 420 | 1,008 |

LOADER ATTACHMENTS

| | DAY | WEEK | MO. |
|------------------------|-------|-------|---------|
| AUGER WITH BIT | \$165 | \$495 | \$1,188 |
| AUGER BUCKET | 190 | 570 | 1,368 |
| BREAKER (500 FT LB) | 215 | 645 | 1,548 |
| BREAKER (750 FT LB) | 240 | 720 | 1,728 |
| BRUSHCAT ROTARY CUTTER | 215 | 645 | 1,548 |
| BRUSH CUTTER | 300 | 900 | 2,160 |
| MULCHER | 450 | 1,350 | 3,240 |
| GRAPPLE BUCKET | 190 | 570 | 1,368 |
| PALLET FORKS | 90 | 270 | 648 |
| 14" PLANER (LOW-FLOW) | 265 | 795 | 1,908 |
| 18" PLANER (LOW-FLOW) | 315 | 945 | 2,268 |
| 24" PLANER (HIGH-FLOW) | 340 | 1,020 | 2,448 |
| 40" PLANER (HIGH-FLOW) | 385 | 1,155 | 2,772 |
| ROCK BUCKET | 165 | 495 | 1,188 |
| SOIL CONDITIONER | 190 | 570 | 1,368 |
| STUMP GRINDER | 190 | 570 | 1,368 |
| SWEEPER | 190 | 570 | 1,368 |
| TILLER | 190 | 570 | 1,368 |
| TREE SHEAR | 190 | 570 | 1,368 |
| TREE SPADE | 315 | 945 | 2,268 |
| TRENCHER | 190 | 570 | 1,368 |

BANDIT CHIPPERS & STUMP GRINDERS

| | DAY | WEEK | MO. |
|---------------------|-------|---------|-----|
| 12" CHIPPER | \$420 | \$1,260 | - |
| 15" CHIPPER | 480 | 1,440 | - |
| 18" CHIPPER | 570 | 1,710 | - |
| 27 HP STUMP GRINDER | 210 | 630 | - |
| 44 HP STUMP GRINDER | 325 | 900 | - |
| 74 HP STUMP GRINDER | 400 | 1,200 | - |

TROWELS

| | DAY | WEEK | MO. |
|------------------------------|------|-------|----------|
| 2' WALK BEHIND | \$72 | \$216 | \$518.40 |
| 3' WALK BEHIND | 72 | 216 | 518.40 |
| 4' WALK BEHIND | 72 | 216 | 518.40 |
| 8 FT - FULLY MECHANICAL | 300 | 810 | 1,994 |
| 8 FT - HYDROSTATIC DUAL FUEL | 300 | 900 | 2,160 |
| 10 FT - HYDROSTATIC DIESEL | 390 | 1,170 | 2,808 |
| 6 FT - FULLY MECHANICAL | 230 | 690 | 1,656 |
| 6 FT - HYDRO | 300 | 900 | 2,160 |
| 8 FT - HYBRID | 300 | 900 | 2,160 |

COMPACTION

| | | | |
|------------------------|------|-------|-------|
| RAMMER/PLATE COMPACTOR | \$75 | \$225 | \$540 |
|------------------------|------|-------|-------|

SCREEDS

| | | | |
|-------------------------------------|-------|-------|-------|
| DUO SCREED POWER UNIT - 10 OR 12 FT | \$120 | \$360 | \$864 |
|-------------------------------------|-------|-------|-------|

CONCRETE BUGGY

| | | | |
|-------------|-------|-------|---------|
| TRACK BUGGY | \$180 | \$540 | \$1,296 |
| TRACK PIVOT | 200 | 600 | 1,440 |

CONCRETE SAWS

| | | | |
|----------|------|-------|-------|
| X150 GAS | \$75 | \$225 | \$540 |
| X4000 | 240 | 720 | 1,728 |

TERMS & CONDITIONS *Visit www.kcbobcat.com/rental for additional information*

Rental rates are based upon a maximum of 8 hours operation per 24 hour day, 40 hours per 7 day week, and 160 hours per 28 day 4-week period. After third week, the fourth week is free. Overtime hours will be prorated. All equipment is subject to availability. A cleaning fee will apply for any excessive concrete, asphalt, animal excrement.

All rates do not include taxes, Rental Protection Plan Fee, delivery and/or pickup.

PROOF OF INSURANCE IS REQUIRED FOR FULL VALUE OF RENTED EQUIPMENT. If liability insurance is not provided, a Rental Protection Plan Fee of 15% will be applied to the total equipment rental charge.

No hourly rates, one day minimum. Rental charges are from time out to time back. Customers will be charged per gallon on machines not returned full of fuel. All prices FOB our facilities. Delivery/pickup available for additional charge, ask for rates. Any and all abuse or damage to

rental equipment will be invoiced to customer accordingly. Extra fuel not provided during rental period.

KC Bobcat Responsibility

- To furnish the machine in working condition FOB lessor's yard.
- To account for any major repair or breakdown due to a defect in material or workmanship.
- Rental rates are subject to change - see dealer for details.

Customer's Responsibility

- To properly maintain the machine (greasing, oil, filter changes, and fuel supply) and return it as it was received, excepting normal wear, reporting to the dealership any mechanical problems. Any necessary tire repairs are the customer's responsibility.
- To account for damages due to abuse or neglect to the equipment and accept full liability for all actions resulting from machine use.
- To properly secure equipment during rental period.